

First Reading: May 9, 2017
Second Reading: May 16, 2017

2017-051
Christian Thoreson
District No. 7
Planning Version

ORDINANCE NO. 13182

AN ORDINANCE TO AMEND CHATTANOOGA CITY CODE, PART II, CHAPTER 38, ZONING ORDINANCE, SO AS TO REZONE PROPERTY LOCATED AT 1615 WEST 40TH STREET, MORE PARTICULARLY DESCRIBED HEREIN, FROM R-1 RESIDENTIAL ZONE TO R-3 RESIDENTIAL ZONE, SUBJECT TO CERTAIN CONDITIONS.

SECTION 1. BE IT ORDAINED BY THE CITY COUNCIL OF THE CITY OF CHATTANOOGA, TENNESSEE, That Chattanooga City Code, Part II, Chapter 38, Zoning Ordinance, be and the same hereby is amended so as to rezone property located at 1615 West 40th Street, more particularly described herein:

An unplatted tract of land located at 1615 West 40th Street being the property described in Deed Book 8433, Page 732, ROHC. Tax Map No. 1550-E-016.

and as shown on the maps attached hereto and made a part hereof by reference, from R-1 Residential Zone to R-3 Residential Zone.

SECTION 2. BE IT FURTHER ORDAINED, That this rezoning shall be approved subject to short term vacation rental only and single family residential only and use of existing structure only.

SECTION 3. BE IT FURTHER ORDAINED, That this Ordinance shall take effect two
(2) weeks from and after its passage.

Passed on second and final reading: May 16, 2017



CHAIRPERSON

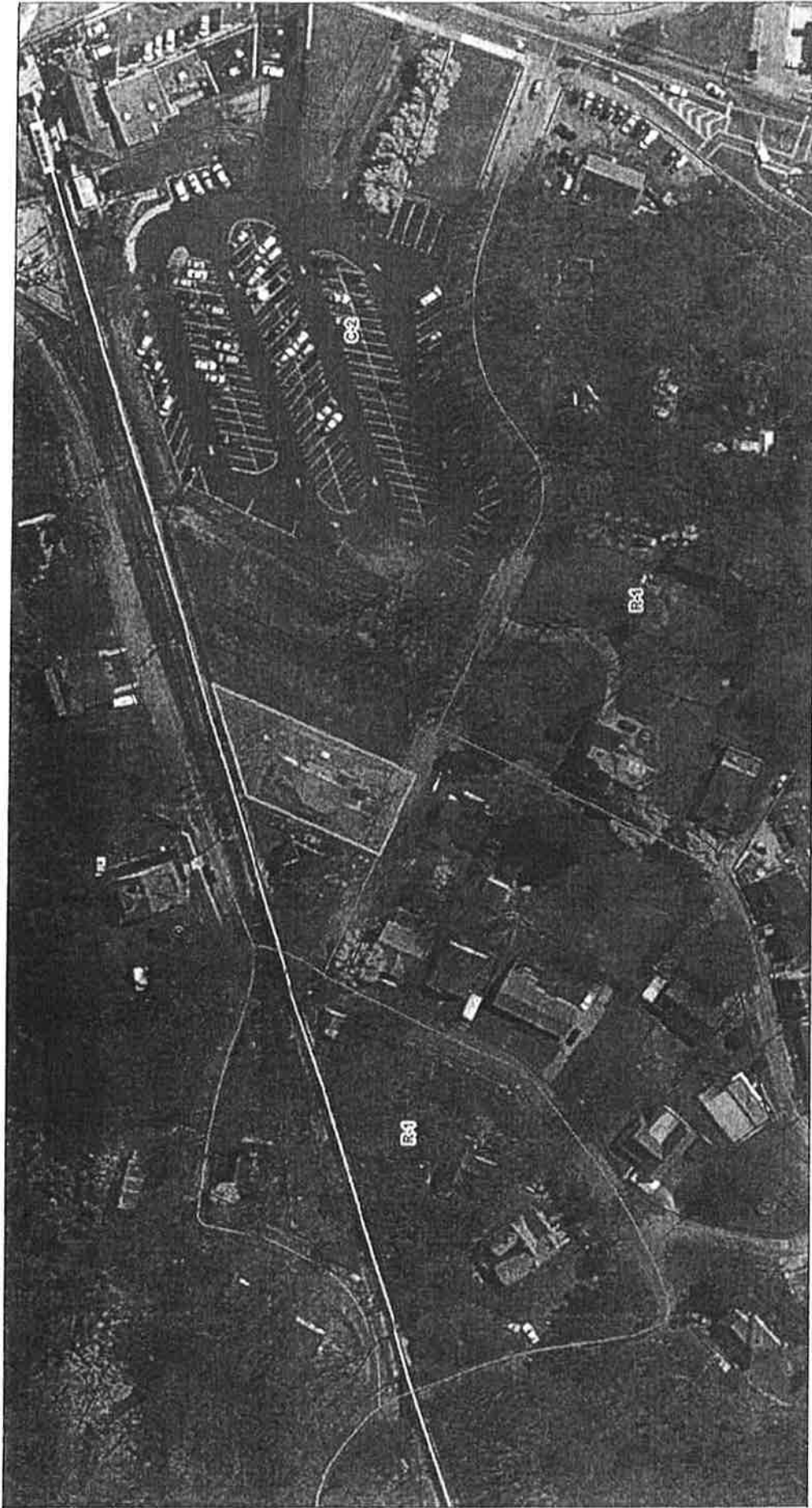
APPROVED: _____ DISAPPROVED: _____



MAYOR

/mem

2017-0051 Rezoning from R-1 to R-3



March 24, 2017

- Council Districts
- Parcels
- Zoning Type Labels
- Special Permits
- Road Centerlines
- Major Streets
- Rail



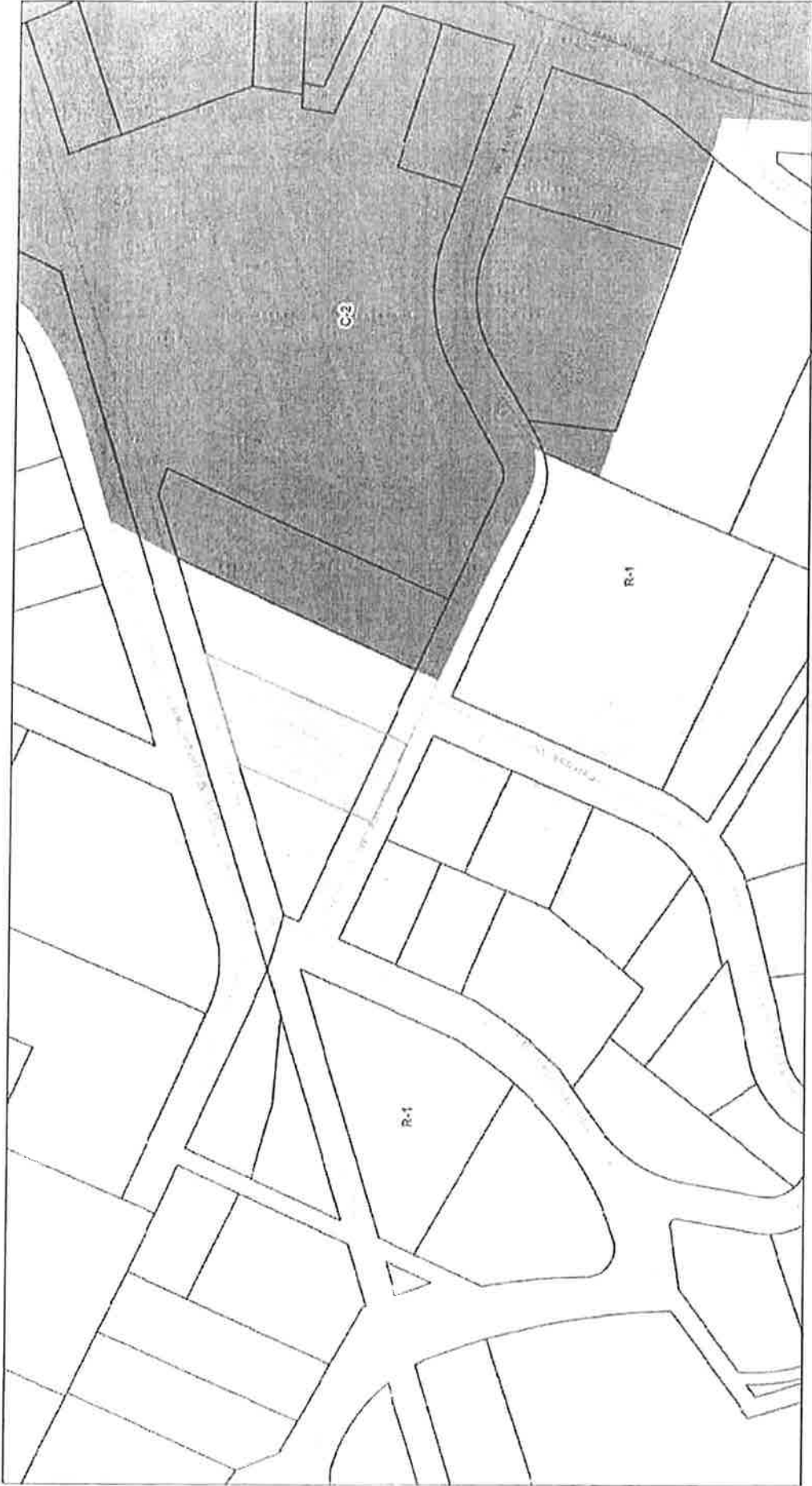
1:1,128



Source: Esri, DigitalGlobe, GeoEye, Earthstar, GeoEye, IGN, Aerotech, Aero, GeoEye, USDA, USGS, AeroGRID, IGN, and the GIS User Community

CHATTANOOGA-HAMILTON COUNTY REGIONAL PLANNING AGENCY

2017-0051 Rezoning from R-1 to R-3



March 23, 2017

□ Parcels

1:1,128



CHATTANOOGA-HAMILTON COUNTY REGIONAL PLANNING AGENCY

Source: Esri, HERE, DeLorme, USGS, Intermap, INCREMENT P, NRCan, Esri Japan, METI, San Geroni, Swisstopo, Esri Korea, Esri (China), Swisstopo, Swisstopo, Esri UK, Esri (USA), Swisstopo, Esri (Canada), Esri (Australia), Esri (New Zealand), Esri (South Africa), Esri (India), Esri (Indonesia), Esri (Philippines), Esri (Vietnam), Esri (Thailand), Esri (Singapore), Esri (Malaysia), Esri (Brunei), Esri (Cambodia), Esri (Laos), Esri (Myanmar), Esri (Burma), Esri (Nepal), Esri (Bhutan), Esri (Bangladesh), Esri (Pakistan), Esri (Afghanistan), Esri (Uzbekistan), Esri (Kyrgyzstan), Esri (Tajikistan), Esri (Turkmenistan), Esri (Azerbaijan), Esri (Georgia), Esri (Armenia), Esri (Yemen), Esri (Oman), Esri (UAE), Esri (Qatar), Esri (Kuwait), Esri (Saudi Arabia), Esri (Iraq), Esri (Syria), Esri (Lebanon), Esri (Jordan), Esri (Israel), Esri (Cuba), Esri (Mexico), Esri (Central America), Esri (Caribbean), Esri (South America), Esri (Africa), Esri (Europe), Esri (Asia), Esri (Oceania), Esri (Antarctica), Esri (Other), Esri (User Community)